

Hangzhou Yile Shangyun Robot Technology Co.,Ltd

LE308E Smart Coffee Vending Machine Daily Maintenance & Matters need Attentions



After-sales group

Apri, 2022.

Contents



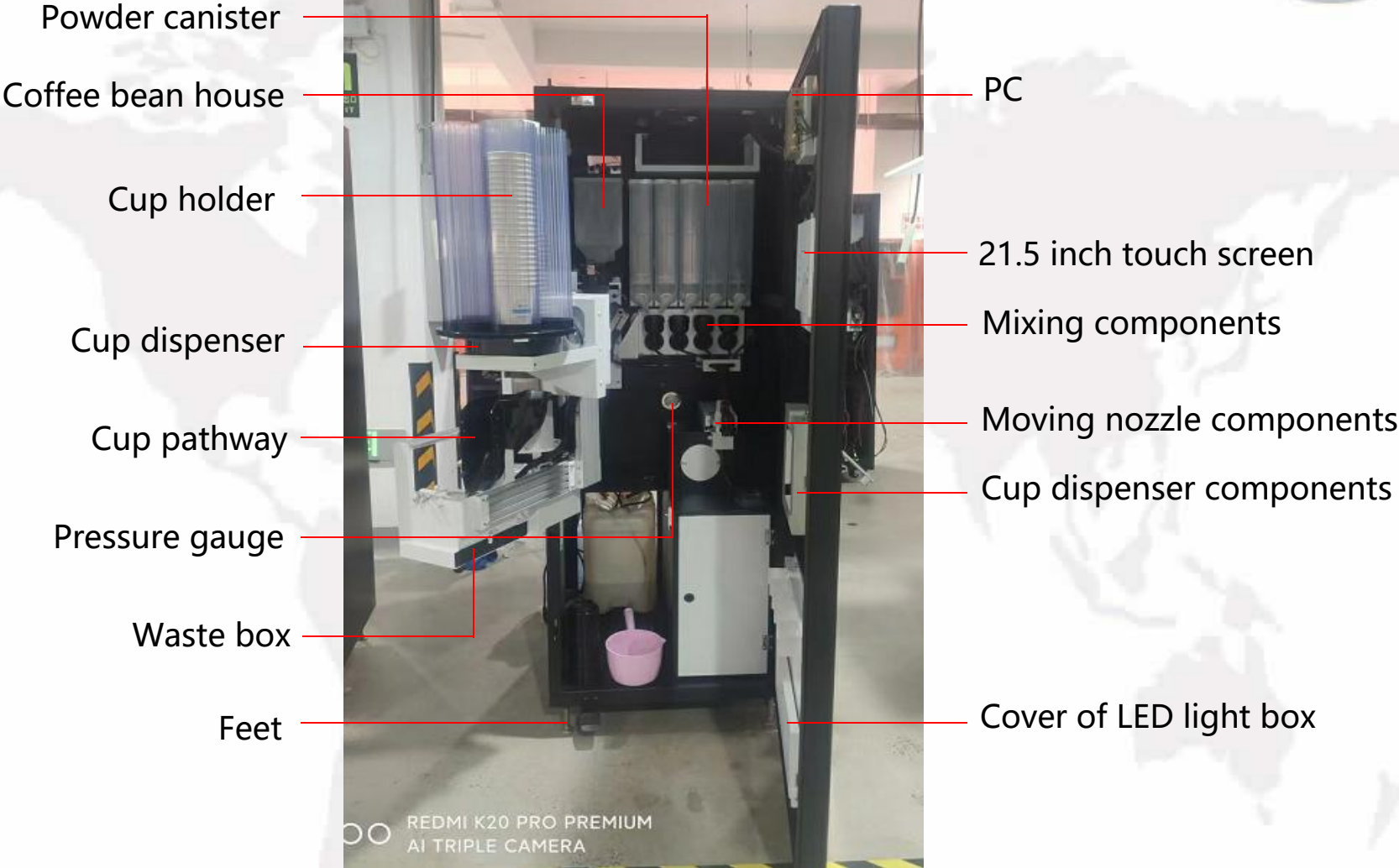
- 1, Appearance
- 2, Requirements for Installation
- 3, To Open the Front Door
- 4, To Insert a SIM Card
- 5, To Load Coffee Beans
- 6, To Load Instant Powder
- 7, To Load Cups
- 8, To Load Lids
- 9, The Installation of Bottled Water
- 10, Routine Maintenance
- 11, The Instruction for Use
- 12, Ingredients
- 13, The Instruction of Background Operation
- 14, The Installation of Operating System
- 15, Common Issues and Solutions
- 16, The Instruction of the Multimeter



Appearance



Appearance



Appearance



Power

Mixing Motor

Soleniod valve

Water chiller

Power cord

Water tank

Components of UV germicidal lamp

Powder motor
Brewing components

Ventilation pipes

Boiler components
Dehumidifier

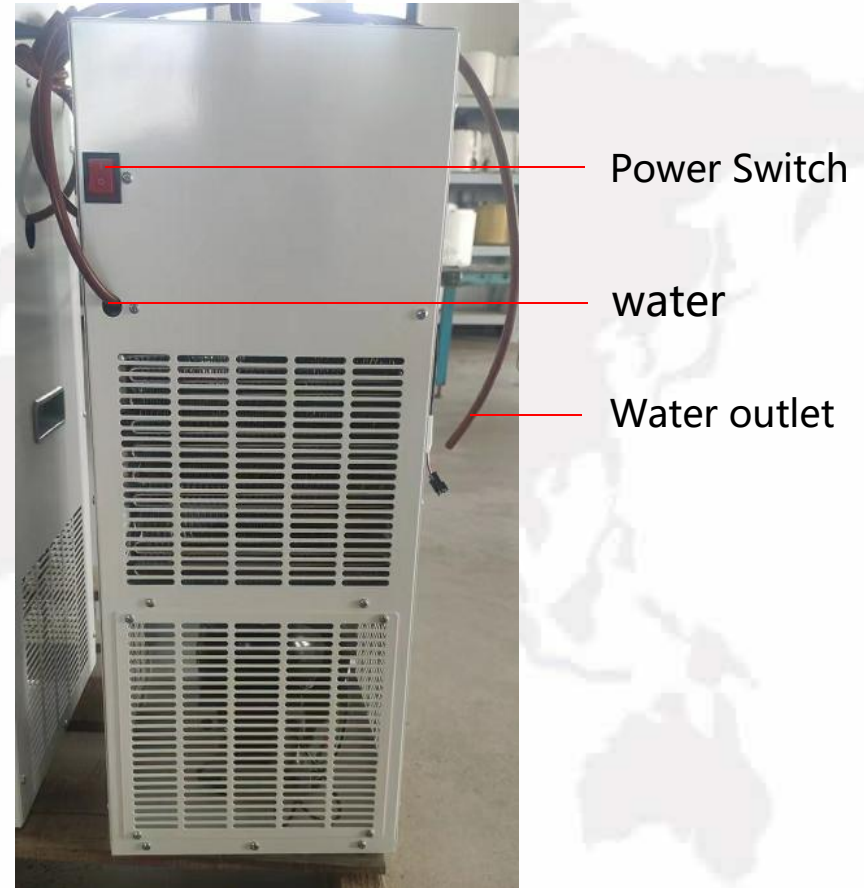
Diaphragm pump

Feet

Appearance



Water Chiller (Optional)



Installation requirements



Please confirm the safety precautions and conditions again before installation, and install the equipment in strict accordance with the following steps: as the picture shows:



1. Please make sure all feet land when place the machine;
2. Adjust the feet clockwise and counterclockwise to make sure the machine parallel to the ground according to gradient.
3. Cut cable tie of the power line and insert it into a special power socket connected with ground cable.
4. If you need extend the power line, it must operated by electrician(ground cable must be used).
5. Switch on the power supply and turn on the power switch, if there is a buzzer, it is into the working state.

To Open the Front Door



1



2



3

1. Insert the corresponding key into the keyhole of the lock handle and turn the key anticlockwise.

2. Push the button below the handle so that the handle pops out. Hold and turn the handle anticlockwise and pull out the door.

3. Attention: the movement of twist and pull should be made simultaneously.

How to Insert the Simi Card into PC



1



2



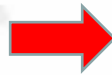
3

- 1.Preparing a Simi card like figure 3 before opening the door.
- 2.Find out the card slot (figure q)
- 3.Pull out the card slot and install the simi card.

To Load Coffee Beans



Hold the coffee bean house with both hands.



Lift it until it is out of its place.



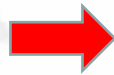
Take out the coffee bean house carefully



To Load Coffee Beans



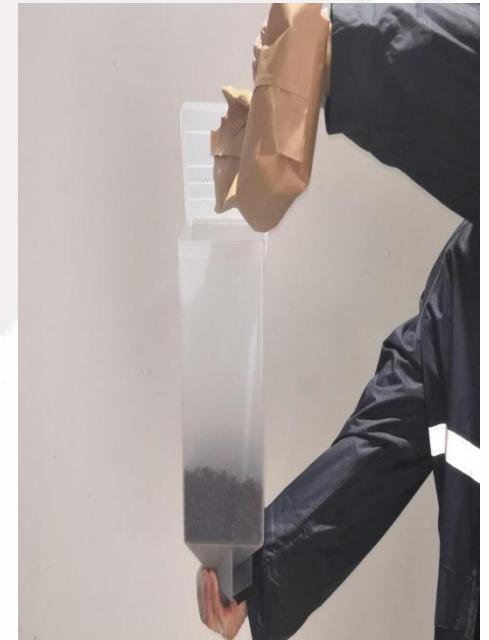
Hold the coffee bean house with both hands.



Open the lid.



Pour coffee bean into it.



To Load Coffee Beans



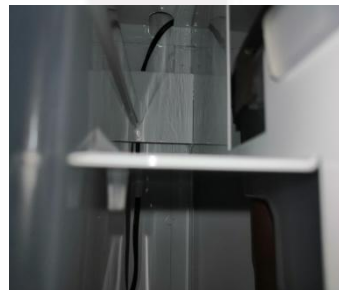
Attention:



Aim the hooks behind the bean house,



at the corresponding holes outside the machine.



Ensure the hooks should be in their respective holes.

To Load Coffee Beans



Pinch the shield of the coffee bean house.



Pull out the shield.



To Load Instant Powder



Hold the nozzle.



Turn the nozzle at 12 o' clock position.



To Load Instant Powder



Hold and lift the nozzle in the front of the canister until the part circled has been detached.



Take out the canister.



Add powder into the canister.



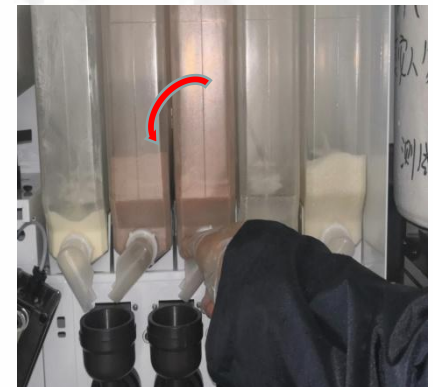
Place the canister the other way round in place.



Suggestion: After adding powder, please label the canister accordingly in order not to get confused next time.



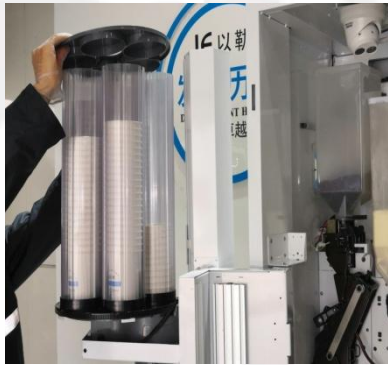
Return the position of the nozzle.



To Load Cups



Take off the lid of the cup holder.



Put cups above the cup dispenser components.



Place them into the cup dispenser.



Attention: Avoid crushing cups while adding them into cup holder.

It is finished as shown below.

To Load Lids



Hook the finger into the hole of the door of lid dispenser.



Pull open the door



Note: add the front several LIDS one by one (5 or so), in case the lid is not added properly

To Load Cups



Hold the lids inside the machine (if there are) not to let them drop by accident using one hand and use the other hand to stack lids onto them.

It's done as shown in the picture below.

Close the door.



Note: add the front several LIDS one by one (5 or so), in case the lid is not added properly

Installation of Bottled Water



Place a bottled water into the machine and open it.



Use a tissue to wipe the pipe.



Stick the pipe into the bottled water.



It's done.



Attention:

3 bottles of water are needed for the following use:

1. 2 for the coffee maker.
2. 1 for the ice maker.

Routine Maintenance



Cleaning and Washing of the Mixing Components



1. Detach the nozzle above the mixing bowl.
2. Pinch the upper part of the mixing bowl to separate and remove it.

Cleaning and Washing of the Mixing Components



Hold the mixing bowl, lift it slightly and unfasten it by turning it anticlockwise.



Routine Maintenance



To Detach and Install the Brewer



1. Unscrew the water pipe head labelled with 4 as shown and pull out the pipe labelled with 3 in the direction shown.
2. Untighten the screws with label 1 and 2 by turning them anticlockwise.
3. Hold and pull out the entire brewer with care as shown in the picture below



1. Aim the hole 8 at the hole 6, 10 at 7, 9 at pin 5. Note that, along with the wheel, the hole 9 is adjustable in which the pin 5 fits better.
2. When they are all in place, twist and tighten the screw 1 and 2 in the opposite direction. 3. Test the function of the brewer and it is all finished.

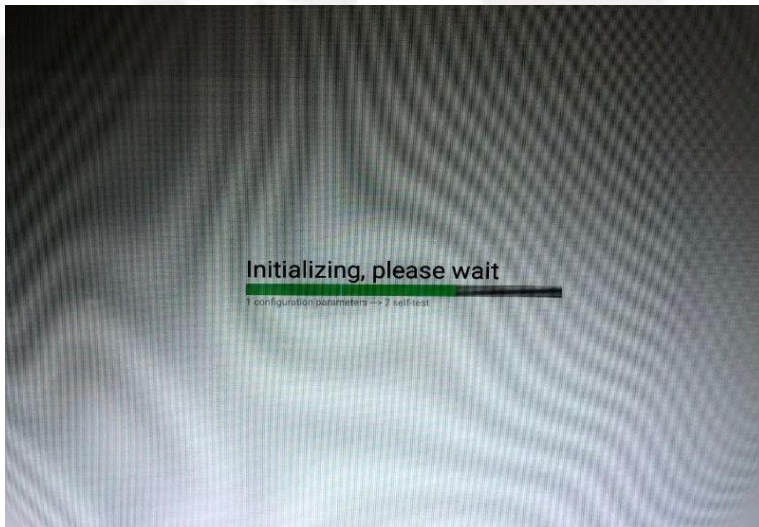


Turn on the Machine and Exhaust



After the preparations are done, insert the power plug into the three-wire grounding socket, turn on the power switch on the back of the machine to turn on the machine, and the screen will enter the system startup interface. When the machine is turned on for the first time, it must be exhausted. After the machine is turned on, there will be a situation in which it is not necessary to exhaust. If the machine is turned on for the first time, you need to click here to exhaust the boiler, which is generally discharged to the normal position of the water outlet.

Intruction for Use



After all the air has been expelled, the launch page will appear and last about 5 seconds and will be ready for use. If it is connected to the internet, there will be a green icon resembling an unlocked lock at the top-left corner circled in red. Then the icon of network (Wi-Fi, 4G, 3G, etc.) will be shown accordingly at the top-right corner circled in blue.

Intruction for Use

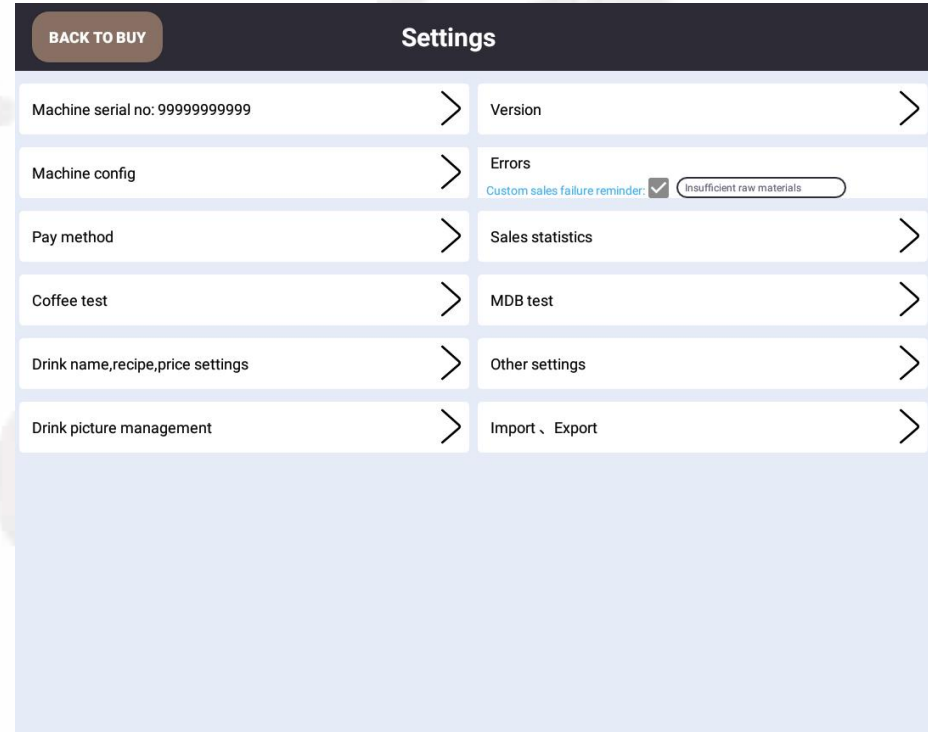


To make a purchase, select the drink you would like, and select the payment you prefer.

Intruction for Use



To Enter the Setting Interface



Machine in standby mode, open the front door of the machine, press and hold for 3 seconds the grey mode button on the industrial computer (MDB) until the setting menu appears.

Instruction for Use



Machine serial no

Settings	
Machine serial no: 9999999999	Version
Machine config	Errors Custom sales failure reminder: <input checked="" type="checkbox"/> Insufficient raw materials
Pay method	Sales statistics
Coffee test	MDB test
Drink name, recipe, price settings	Other settings
Drink picture management	Import, Export

Settings	
Machine serial no: 9999999999	Version
Machine config	Errors Custom sales failure reminder: <input checked="" type="checkbox"/> Insufficient raw materials
Pay method	Sales statistics
Coffee test	MDB test
Drink name, recipe, price settings	Other settings
Drink picture management	Import, Export

Please input password

Cancel OK

Device ID	
Input device ID (11 numbers):	
<input type="text" value="9999999999"/>	1

The device ID of the host computer is an unique identification number and is also an unique number for background operation. To check it, the password is 352356. Please contact administrator when need to change the password.

Instruction for Use



Machine config

Settings

Machine serial no: 9999999999 > Version >

Machine config > Errors >
Custom sales failure reminder insufficient raw materials

Pay method > Sales statistics >

Coffee test > MDB test >

Drink name, recipe, price settings > Other settings >

Drink picture management > Import, Export >

Settings

Machine serial no: 9999999999 > Version >

Machine config > Errors >

Pay method > Sales statistics >

Coffee test > MDB test >

Drink name, recipe, price settings > Other settings >

Drink picture management > Import, Export >

Please input password

Cancel OK

Basic configuration

Machine config

Config for cup station door

Infrared configuration

Falling cup is controlled by APP

Fall cover is controlled by APP

Electronic lock of cabinet door

Time to take a drink (s) 10

Refrigerate way None

Currency config

Currency short name (RMB, China, EN, Other) EN

currency symbol

RS232 protocol setting

Coffee serial port /dev/ttyO3

Ice machine serial port /dev/ttyO4

MDB serial port /dev/ttyO2

Card reader (ID/IC) /dev/ttyO2

Scanner /dev/ttyO2

u disk path /mnt/udisk

Machine config

Basic configuration

General configurations settings

Advanced password

Language English

Basic configuration

Machine config

Refrigerate way None

Currency config

Currency short name (RMB, China, EN, Other) EN

currency symbol

RS232 protocol setting

Coffee serial port /dev/ttyO3

Ice machine serial port /dev/ttyO4

MDB serial port /dev/ttyO2

Card reader (ID/IC) /dev/ttyO2

Scanner /dev/ttyO2

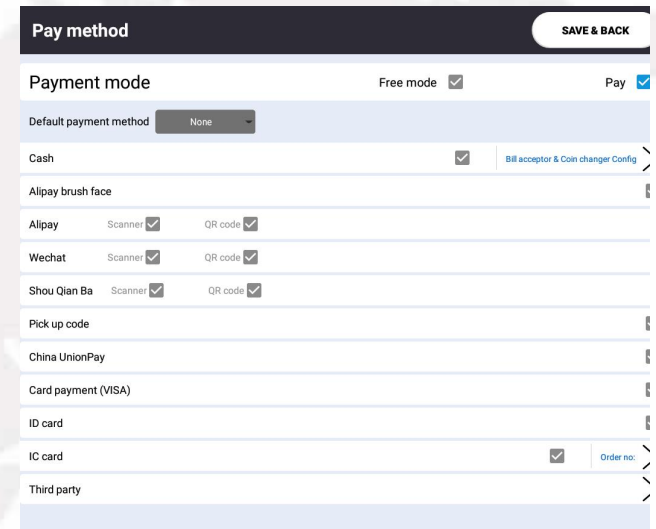
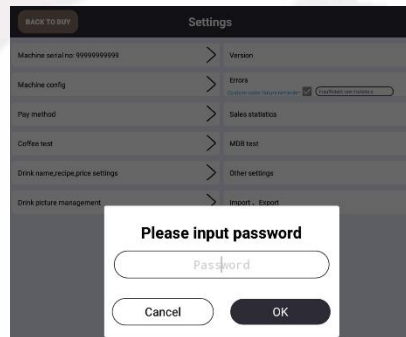
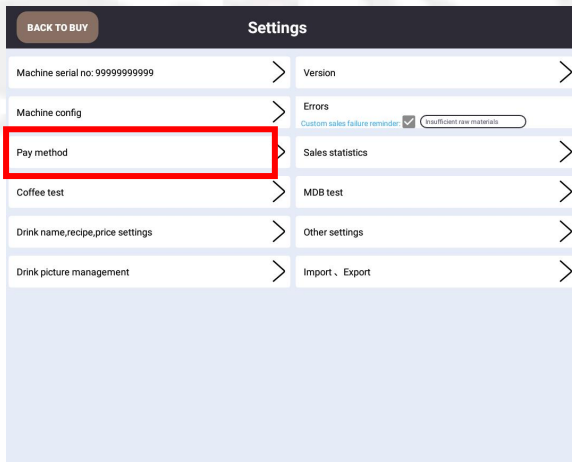
u disk path /mnt/udisk

The information under this option is not to be changed. If there's a need, please contact the administrator first. (Password352356)

Instruction for Use



Pay Method



This option is for setting pay method. The default password is 352356. Please contact the administrator before changing it.

Instruction for Use



Coffee Test

BACK TO BUY Settings

Machine serial no: 9999999999	>	Version	>
Machine config	>	Errors	>
Pay method	>	Sales statistics	>
Coffee test	>	MDB test	>
Drink name, recipe, price settings	>	Other settings	>
Drink picture management	>	Import, Export	>

Coffee test (This interface is for testing only.) BACK

GRINDER MOTOR ELECTROMAGNETIC VALVE

BREWER MOTOR UP BREWER MOTOR DOWN

WATER PUMP (100ML) EXHAUST (1000ML) CLEAN BREWER CLEAN ALL

OPEN CUP DOOR CLOSE CUP DOOR FALL CUP FALL LID FALL STICK MOVING NOZZEL OUT MOVING NOZZEL IN

RESET DEVICE

ALL FAULTS

Current water temperature: °C
Max. water temperature: °C
Min. water temperature: °C
Surplus water volume: ml
Error code:
Current action:
Results:
Machine state:
Current configuration:
Refresh time:

Execute results
2022-04-15 13:17:14.958 Machine connect state: true

The test interface shows the condition and the test result of the machine. Frequently used information can be seen as to ventilation, cleaning system of grinding components, cleaning system of mixing components, test of beverage, temperature of the boiler, current working condition, synchronization of parameter. Try not use any functions other than those mentioned above.

Instruction for Use



Settings for Drink Name, Price and Recipe

The screenshot shows the 'Settings' app interface. On the left, the 'Settings' menu is visible with the following items: Machine serial no: 9999999999, Machine config, Pay method, Coffee test, **Drink name, recipe, price settings** (highlighted with a red box), and Drink picture management. A red arrow points from this menu item to the right-hand screenshot.

The right-hand screenshot shows the 'Drink name, recipe, price settings' screen. It features a 'BACK' button and a 'SAVE' button. Below the title bar, there are buttons for 'ADDING A DRINK', 'GET FACTORY RECIPE', and 'Download and update all drinks'. The 'Price decimal point quantity' is set to 'Default'. The screen displays two drink entries:

Drink	Name	Price	Actions	
<input checked="" type="checkbox"/>	Drink1 Name	Espresso	Price: 20	
<input checked="" type="checkbox"/>	Drink2 Name	Americano	Price: 20	

Enter the interface of drink name, recipe, price setting, which is for setting the product name, price, recipe and the number of selling goods.

The Number of Drinks: It needs to start at drink 1, and customer can set it by yourself.

Drink Name and Price: The drink name and price can be changed directly. Note that the cash price is at least 0.5 yuan or a multiple of 0.5, and Alipay and WeChat are at least 0.01 yuan.

Instruction for Use



Drink Picture Management

Settings

BACK TO BUY

Machine serial no: 9999999999	Version
Machine config	Errors
Pay method	Sales statistics
Coffee test	MDB test
Drink name, recipe, price settings	Other settings
Drink picture management	Import, Export

Import, Export

EXPORT THE CONFIGURATION

IMPORT THE CONFIGURATION

IMPORT VIDEOS AND PICTURES

- Build a folder in U disk: vms.
- Drinks pictures: place them under the file of vms/pictures in the U disk, firstly build a folder pictures under the vms folder, and then put the drink pictures into the pictures file.
- Sales advertising map, advertising video: Place it under the file of vms/sales in the U disk, firstly build a folder sales under the vms folder, then put the pictures and videos under the sales file.
 - (1) Named name.png, the recommended size is 400*400px.
 - (2) Sales advertising map: named s1.png, s2.png..., the recommended number is less than 10, the recommended size is 1000*1000px, the recommended size is less than 3MB.
 - (3) Sales advertising video: named s1.mp4, only supports one video, the recommended aspect ratio is 100:50, the recommended size is less than 50MB.
- Standby advertising map, advertising video: Place it under the file of vms/waites in the U disk, firstly build a folder waites under the vms folder, then put the pictures and videos under the waites file.
 - (1) Standby advertising map: named w1.png, w2.png..., the recommended number is less than 5, the recommended size is 1020*1000px, the recommended size is less than 3MB.
 - (2) Standby advertising video: named w1.mp4, only supports one video, the recommended aspect ratio is 1920:1080, the recommended size is less than 50MB.
- Drinking advertising map, advertising video: Place it under the file of vms/outes in the U disk, firstly build a folder outes under the vms folder, then put the pictures and videos under the outes file.
 - (1) Drinking advertising map: named l1.png, l2.png..., the recommended number is less than 5, the recommended size is 1920*1000px, the recommended size is less than 3MB.
 - (2) Drinking advertising video: named l1.mp4, only supports one video, the recommended aspect ratio is 1920:1080, the recommended size is less than 50MB.
- Payment icon: Place it under the vms/appkey file in the U disk, firstly build a folder appkey under the vms folder, and then put the third party payment icon under the appkey file.
 - (1) Third party payment icon: named trespay1.png..., trespay4.png, up to 4, the recommended size is 200*200px.
 - (2) Card payment icon: named cardpay.png, the recommended size is 200*200px.
- Other: Place it under the vms/emes file in the U disk, firstly build a folder emes under the vms folder, and then put the pictures under the emes file.
 - (1) Background pictures: named aallebg.png, the recommended size is 1920*1000px.
 - (2) LOGO pictures: named aallelogo.png, recommended height of 100px.
 - (3) Drink start making prompt video: named dringstart.mp3, the recommended size is less than 10KB.
 - (4) Voice prompt for end of beverage preparation: named drinkingend.mp3, the recommended size is less than 10KB.
- If failure to import, the vms file of the U disk can be copied directly (the file has been operated according to the above steps) to the adcard file of the industrial computer.

Drink picture management

SAVE & BACK

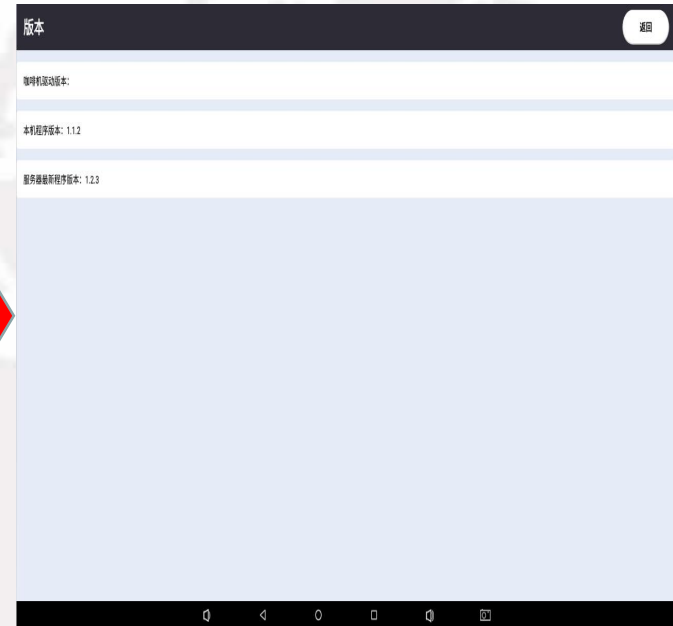
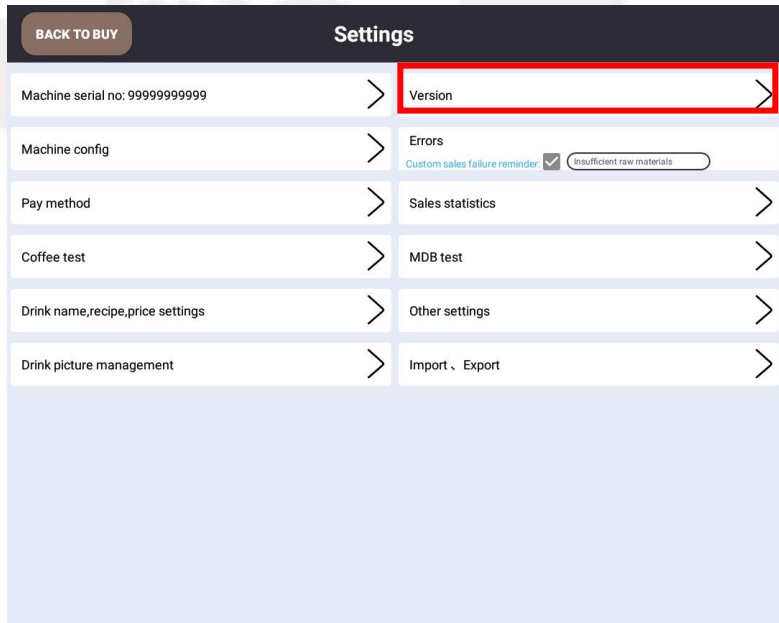
IMPORT PICTURES

Before importing pictures, make pictures according to the requirements and put them into the U disk for import.

Instruction for Use



Drink Picture Management



The company has been optimizing the software of this product and will release new versions from time to time. Customers can check the version update information here. If a new version appears, it is best to update it. If it is not updated, you need to ask the supplier.

Instruction for Use



Errors

BACK TO BUY **Settings**

Machine serial no: 99999999999	>	Version	>
Machine config	>	Errors	>
Pay method	>	Custom sales failure reminder: <input checked="" type="checkbox"/> <input type="checkbox"/>	>
Coffee test	>	Sales statistics	>
Drink name, recipe, price settings	>	MDB test	>
Drink picture management	>	Other settings	>
		Import , Export	>

When there is a error with the machine, the errors will appear here. Generally, the errors will disappear after the machine is restarted. If you want to know the specific error, click Restart the device for specific errors.

Instruction for Use



Sales Statistics

[BACK TO BUY](#) **Settings**

Machine serial no: 9999999999	>	Version	>
Machine config	>	Errors	>
Pay method	>	Custom sales failure reminder: <input checked="" type="checkbox"/> Insufficient raw materials	>
Coffee test	>	MDB test	>
Drink name, recipe, price settings	>	Other settings	>
Drink picture management	>	Import \ Export	>

Sales statistics



Sales statistics [BACK](#)

[CLEAR SALES RECORDS](#) Total sales (cup) 0 Total sales (amount) 0

All [SEARCH](#)

Sale start time:
It will save the sales data of recent 3 months and clear the sales data automatically every time restart the machine.

Total number of articles

The interface provides the function of checking sales total sales, total sales amount and real-time transaction status. The sales data can be cleared. For daily or monthly sales, it can be viewed and exported in the background.

Instruction for Use



MDB Test

[BACK TO BUY](#) **Settings**

Machine serial no: 99999999999	>	Version	>
Machine config	>	Errors	>
		Custom sales failure reminder: <input checked="" type="checkbox"/> Insufficient raw materials	
Pay method	>	Sales statistics	>
Coffee test	>	MDB test	>
Drink name, recipe, price settings	>	Other settings	>
Drink picture management	>	Import , Export	>

Do not use this test.

Instruction for Use



Other Settings

Settings BACK TO BUY

Machine serial no: 9999999999	>	Version	>
Machine config	>	Errors	>
		Custom sales failure reminder <input checked="" type="checkbox"/> Insufficient raw materials	
Pay method	>	Sales statistics	>
Coffee test	>	MDB test	>
Drink name, recipe, price settings	>	Other settings	>
Drink picture management	>	Import, Export	>



Other settings SAVE & BACK

- Advertising config >
- Sales of goods (1~10) **Row** - 5 + **Column** - 2 +
- Show sales steps diagram
- Goods background **White** **Transparent**
- Sounds (start and finish making drinks)
- Save log
- Clear cache 0.00KB >

This is the optional function for brocasting advertising

Instruction for Use



Import, Ezzzport

BACK TO BUY **Settings**

Machine serial no: 9999999999	>	Version	>
Machine config	>	Errors	>
Pay method	>	Custom sales failure reminder <input checked="" type="checkbox"/> Insufficient raw materials	>
Coffee test	>	Sales statistics	>
Drink name,recipe,price settings	>	MDB test	>
Drink picture management	>	Other settings	>
	>	Import , Export	>



Import , Export **BACK**

EXPORT THE CONFIGURATION

Export the coffee configurations of the software to the file of vm/config of U disk.(Powder box configuration, sugar formula, coffee recipe, temperature configuration, clean configuration)

IMPORT THE CONFIGURATION

Import the coffee configurations of the file of vm/config of U disk to the software.(Powder box configuration, sugar formula, coffee recipe, temperature configuration, clean configuration)

IMPORT VIDEOS AND PICTURES

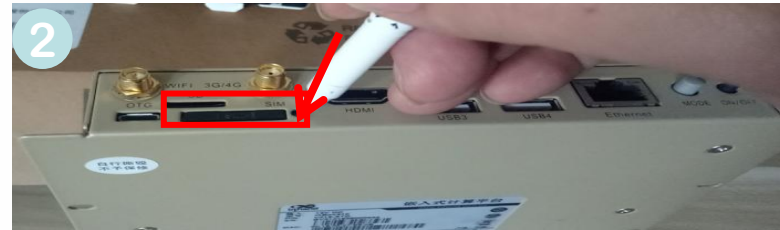
1. Build a folder in U disk: vm.
2. Drinks pictures: place them under the file of vm/goodsimg in the U disk; firstly build a folder goodsimg under the vm folder, and then put the drink pictures into the goodsimg file.
(1) Named name.png, the recommended size is 400*400px.
3. Sales advertising map, advertising video: Place it under the file of vm/saleres in the U disk; firstly build an folder saleres under the vm folder, then put the pictures and videos under the saleres file.
(1) Sales advertising map: named s1.png, s2.png..., the recommended number is less than 10, the recommended size is 1000*590px, the recommended size is less than 3MB.
(2) Sales advertising video: named s1.mp4, only supports one video, the recommended aspect ratio is 100:59, the recommended size is less than 50MB.
4. Standby advertising map, advertising video: Place it under the file of vm/waitres in the U disk; firstly build an folder waitres under the vm folder, then put the pictures and videos under the waitres file.
(1) Standby advertising map: named w1.png, w2.png..., the recommended number is less than 5, the recommended size is 1920*1080px, the recommended size is less than 3MB.
(2) Standby advertising video: named w1.mp4, only supports one video, the recommended aspect ratio is 1920:1080, the recommended size is less than 30MB.
5. Drinking advertising map, advertising video: Place it under the file of vm/outres in the U disk; firstly build an folder outrs under the vm folder, then put the pictures and videos under the outrs file.
(1) Drinking advertising map: named t1.png, t2.png..., the recommended number is less than 5, the recommended size is 1920*1080px, the recommended size is less than 3MB.
(2) Drinking advertising video: named t1.mp4, only supports one video, the recommended aspect ratio is 1920:1080, the recommended size is less than 30MB.
6. Payment icon: Place it under the vm/appkey file in the U disk; firstly build a folder appkey under the vm folder, and then put the third-party payment icon under the appkey file.
(1) Third-party payment icon: named threepay1.png..., threepay6.png, up to 6, the recommended size is 200*200px.
7. Card payment icon: named cardpay.png, the recommended size is 200*200px.
8. Other: Place it under the vm/vmres file in the U disk; firstly build a folder vmres under the vm folder, and then put the pictures under the vmres file.
(1) Background pictures: named salebg.png, the recommended size is 1920*1080px.
(2) LOGO pictures: named salelogo.png, recommended height of 100px.
(3) Drinks start making prompt voice: named drinkingstart.mp3, the recommended size is less than 10KB.
(4) Voice prompt for end of beverage preparation: named drinkingend.mp3, the recommended size is less than 10KB.
8. If failure to import, the vm file of the U disk can be copied directly (the file has been operated according to the above steps) to the sdcard file of the industrial computer.

The interim video during brewing and pictures of screensaver, background and products can all be replaced with those imported via USB drive according the related instruction.

How to Connect to the Internet



Installation of SIM Card



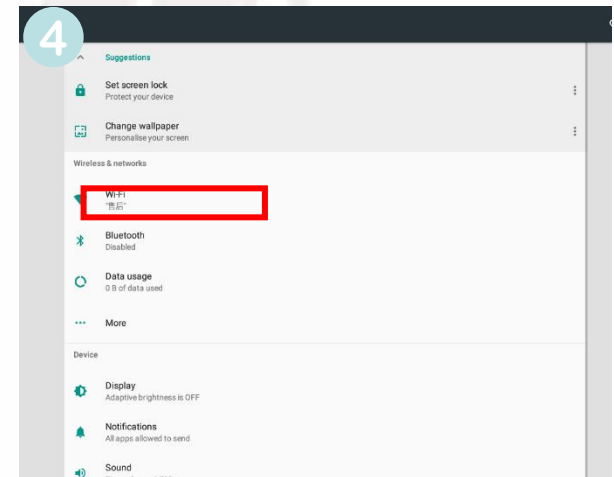
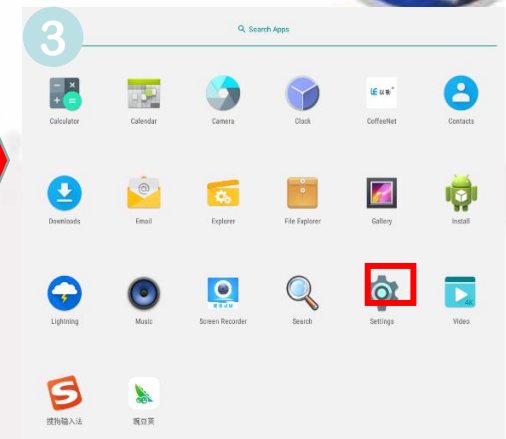
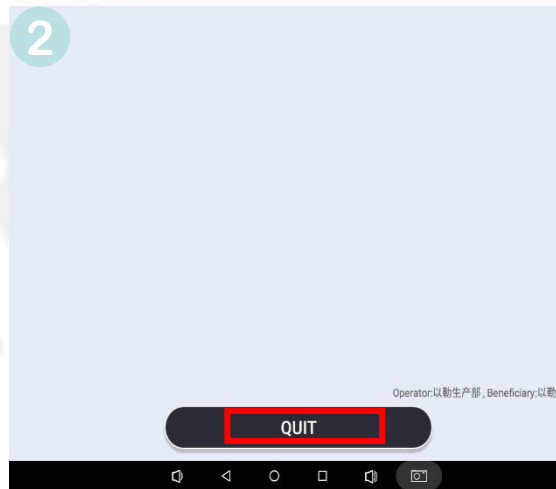
Power off the machine first

1. Remove the antenna and find the SIM slot as shown in the picture.
2. Stick into the hole painted in yellow beside the slot using a thin object.
3. Pull out the SIM tray.
4. Place a SIM card into the tray.
5. Insert the tray into the industrial computer, install the antenna and power on the computer.

To Connect to the Internet



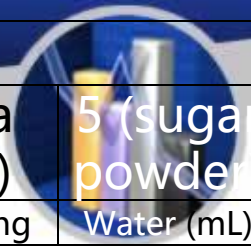
Wi-Fi Connection



1. As the machine is in motion, push the mode button.
2. Exit the settings page.
3. Now the screen shows the system interface. Click the settings button.
4. In wireless network section, switch on Wi-Fi. The computer is searching for Wi-Fi nearby, click and join a Wi-Fi available.

Notes: the account and password of the Wi-Fi to be joined should be known first.

Recipes



Recipe						
No. of Canister	6 (coffee bean)	1 (black tea)	2 (milk foam)	3 (flat white)	4 (cocoa powder)	5 (sugar powder)
No. of beverage	Name	(No. of canister)	Amount (s)	Water (mL)	Time of Mixing	Water (mL)
Water (mL)	Latte Macchiato	2	5	100	0	230ML
		6		50	0	
		6		50	0	
		4	1	30	0	
Water (mL)	Espresso Macchiato	6		50	0	230ML
		2	3	50	0	
		4	2	50	0	
		6		50	0	
		5	1	30	0	
Beverage 3	Coffee Latte	2	3	80	0	230ML
		6		60	0	
		6		60	0	
		5	1	30	0	
Beverage 4	Cappuccino	6		50	0	230ML
		2	3	100	0	
		6		50	0	
		5	1	30	0	
Beverage 5	Latte Macchiato	2	5	100	0	230ML
		6		50	0	
		6		50	0	
		5	1	30	0	
Beverage 6	Chocolate Milk	4	5	100	0	230ML
		2	5	100	0	
		5	1	30	0	

Recipes



Beverage 7	Espresso	6		50	0	130ML
		6		50	0	
		5	1	30	0	
Beverage 8	Black Tea	1	5	200	0	230ML
		5	1	30	0	
Beverage 9	Milk Tea	2	3	100	0	220ML
		1	2	90	0	
		5	1	30	0	
Beverage 10	Chocolate Latte	6		50	0	230ML
		2	3	70	0	
		4	1	30	0	
		6		50	0	
		5	1	30	0	
Beverage 11	Americano	6		100	0	230ML
		6		100	0	
		5	3	30	0	
Beverage 12	Chocolate Espresso	4	2	40	0	170ML
		6		50	0	
		6		50	0	
		5	1	30	0	

Recipes



Beverage 13	Flat White	3	5	200	0	150ML
		5	1	30	0	
Beverage 14	Hot Chocolate	4	6	200	0	230ML
		5	1	30	0	
Beverage 15	Hot Milk	2	5	200	0	230ML
		5	1	30	0	
Beverage 16	Hot Water	1		110	0	230ML
		2		30	0	
		3		30	0	
		4		30	0	
		5		30	0	

Instruction of Background Operation



1. Homepage of Background Operation:

<http://ylvm.levending.net/ylvm/login.jsp?sessionid=0F07D10F775D18C267990BC4AB8F8888>

以勒新零售平台

2021年1月1号之前的数据将在2022年5月1

Background page Refresh Operations

The information about machines and transaction

An overview of the system

Version information:	v1.6.7
Weather:	杭州 今天(周二): 19~33°C多云 明天(周三): 16~22°C中
Website address:	以勒官网 ID卡后台地址
Current login user:	客户培训
Current operator:	客户培训账号

Data statistics

On-line:0	Off-line:2	Total machine:2
-----------	------------	-----------------

Important notice

NEW NEW NEW

2021年1月1号之前的数据将在2022年5月1号起不在以勒平台开放查询, 请及时导出数据并保存! (Attention please! All the data before Jan. 1, 2021 on the LE platform will be closed on May 1, 2022, please export the data and save in time!)

Data statistics

sales

Monthly sales data

Daily sales data

Sales amount

Sales

Legend: Sales (blue), Sales amount (orange), Profits (red)

Instruction of Background Operation



2. Personal Center

以勒新零售平台 2021年1月1号之前的数据将在2

Background page Change password × Refresh Operations

LE 客户培训 Hello!

- Personal center
- Change password**
- Log information
- Pay unit
- User management
- Equipment
- 设备电子锁管理
- Sales record
- Sales statistics
- Goods
- PUSH
- Coffee recipe
- BUG and suggestion
- Renew manage
- System manageme...

Change password

username khtest@qq.com

new password Please enter a new password

Confirm password Please enter the new password again

Login immediately Reset

The username can't change, but the password is changeable

Personal center includes two parts: change password and log information

Instruction of Background Operation



以勒新零售平台



n please! All the data before Jan. 1, 2021 on the LE platform will be closed on May 1, 2022 ,please export the data and save in time!



客户培训 Hello!

Personal center

Change password

Log information

Pay unit

User management

Equipment

设备电子锁管理

Sales record

Sales statistics

Goods

PUSH

Coffee recipe

BUG and suggestion

Renew manage

System manage...

Background page

Change password

Log information

Refresh

Operations

Email:

Query

Log information shows the operation information such as when did the you log in to the background and make any changes

Num	Email	Operating time	Operating IP	Specific operation
1	khatest@qq.com	2022-04-12 13:58:09	122.224.68.98	登陆
2	khatest@qq.com	2022-04-12 13:55:57	122.224.68.98	登陆
3	khatest@qq.com	2022-04-12 13:50:57	122.224.68.98	登陆
4	khatest@qq.com	2022-04-12 13:44:04	122.224.68.98	登陆
5	khatest@qq.com	2022-03-31 15:46:47	180.111.215.147	登陆
6	khatest@qq.com	2022-03-22 10:06:11	180.111.215.147	登陆
7	khatest@qq.com	2022-03-15 16:06:09	122.224.68.98	登陆
8	khatest@qq.com	2022-03-15 16:05:46	122.224.68.98	登陆
9	khatest@qq.com	2022-03-09 16:28:25	122.224.68.98	登陆
10	khatest@qq.com	2022-03-02 19:59:50	122.224.68.98	登陆
11	khatest@qq.com	2022-03-02 19:51:13	122.224.68.98	登陆
12	khatest@qq.com	2022-02-25 18:11:51	122.224.68.98	登陆
13	khatest@qq.com	2022-02-25 16:31:32	122.224.68.98	登陆
14	khatest@qq.com	2022-02-25 16:04:42	122.224.68.98	登陆
15	khatest@qq.com	2022-02-22 13:22:57	122.224.68.98	登陆

Instruction of Background Operation



3. Pay Unit

以勒新零售平台 2021年1月1号之前的数据将在2022年5月1号起不在以勒平台开放查询，请及时导出数据并保存！(Attention please! All the data before Jan. 1, 2021 c

Background page pay settings Refresh Operations

Receiving unit name : Receiving unit ID :

WeChat public platform application ID(AppID) : Alipay service window(App ID) : Query Increase

2, Add new pay unit

Num	Editor	Delete	Configure alipa...	Configure WeC...	配置ID卡	Receiving unit ID	Receiving unit name	address	The co
1	Editor	Delete	Set up	Set up	Set up	16195077193211423	Hangzhou Yile Shangyu...	NO.100 Changda Road, Yuhang E...	张
2	Editor	Delete	Set up	Set up	Set up	16195002755811471	ddd	ddd	dd
3	Editor	Delete	Set up	Set up	Set up	15862246613281433	上海蜜熊	外滩	熊
4	Editor	Delete	Set up	Set up	Set up	15844298780931431	上海鱼和水	移动智地	测
5	Editor	Delete	Set up	Set up	Set up	15759504513569589	测试	青岛	青
6	Editor	Delete	Modify	Set up	Set up	15693930657189711	czq	czq1	czq
7	Editor	Delete	Set up	Set up	Set up	15506715743321441	张是	杭州	张

1, Click Pay unit and then Pay settings

LE
客户培训 Hello!
Personal center
Pay unit
pay settings
User management
Equipment
设备电子锁管理
Sales record
Sales statistics
Goods
PUSH
Coffee recipe
BUG and suggestion
Renew manage
System manageme...

Instruction of Background Operation



以勒新零售平台

1, 2022 ,please export the data and save in time!



客户培训 Hello!

- Personal center
- Pay unit
- pay settings**
- User management
- Equipment
- 设备电子锁管理
- Sales record
- Sales statistics
- Goods
- PUSH
- Coffee recipe
- BUG and suggestion
- Renew manage
- System managem...

Background page pay settings Refresh Operations

Receiving unit name : Receiving unit ID :

WeChat public platfo

增加收款单位

Num	Editor
1	Editor
2	Editor
3	Editor
4	Editor
5	Editor
6	Editor
7	Editor

Receiving unit

Please enter the receipt name of organization

支付宝收款

自己收款帐号

address

Please enter address

The contact

Please enter the contact person

Contact number

Please enter your contact number

Submit immediately

Reset

3, Please enter the information about new pay unit

Instruction of Background Operation



以勒新零售平台

2021年1月1号之前的数据将在2022年5月1号起不在以勒平台开放查询，请及时导出数据并保存！（Attention please）

Background page pay settings Refresh Operations

Receiving unit name : Receiving unit ID :

WeChat public platform application ID(AppID) : Alipay service window(App ID) : Query Increase

Num	Editor	Delete	Configure alipa...	Configure WeC...	配置ID卡	Receiving unit ID	Receiving unit name	address	The co
1	Editor	Delete	Set up	Set up	Set up	16195077193211423	Hangzhou Yile Shangyu...	NO.100 Changda Road, Yuhang E...	张
2	Editor	Delete	Set up	Set up	Set up	16195002755811471	ddd	ddd	dd
3	Editor	Delete	Set up	Set up	Set up	15862246613281433	上海蜜饯	外滩	熊
4	Editor	Delete	Set up	Set up	Set up	15844298780931431	上海鱼和水	移动暂地	测
5	Editor	Delete	Set up	Set up	Set up	15759504513569589	测试	青岛	青
6	Editor	Delete	Modify	Set up	Set up	15693930657189711	czq	czq1	czq
7	Editor	Delete	Set up	Set up	Set up	15506715743321441	张是	杭州	张

4, After add the new pay unit, click "set up" to edit the corresponding receiving unit ID

Instruction of Background Operation



以勒新零售平台 2021年1月1号之前的数据将在2022年5月1号起不

Background page pay settings Refresh Operations

Receiving unit name: Receiving unit ID:

WeChat public platfo

Configure alipay account

Alipay service window(App ID)

Application of the private key PKCS8

Alipay public key

Encryption type RSA2(SHA256) RSA(SHA1)

5, Parameters obtained according to the parameter flow

Picture of QR code

6, Click "Validated parameter", there will appear a QR code picture

Num	Editor
1	<input type="button" value="Editor"/>
2	<input type="button" value="Editor"/>
3	<input type="button" value="Editor"/>
4	<input type="button" value="Editor"/>
5	<input type="button" value="Editor"/>
6	<input type="button" value="Editor"/>
7	<input type="button" value="Editor"/>

Yuhang E... 张
dd
熊
测站
青
czq
张景

Previous 1 Next 共 7 条 15 条/页

Instruction of Background Operation



以勒新零售平台

2021年1月1号之前的数据将在2022年5月1号起不在以勒平台开放查询，请及时导出数据并保存！(Attention please! All the data before Jan. 1, 2021 on tl



客户培训 Hello!

- Personal center
- Pay unit
- pay settings**
- User management
- Equipment
 - 设备电子锁管理
- Sales record
- Sales statistics
- Goods
- PUSH
- Coffee recipe
- BUG and suggestion
- Renew manage
- System manageme...

Background page pay settings Refresh Operations

Receiving unit name : Receiving unit ID :

WeChat public platfo

Configure WeChat account

WeChat public platform application ID(AppID)	<input type="text"/>
WeChat pays the merchant number	<input type="text"/>
WeChat pays the merchant platform API key	<input type="text"/>

Region Within China Southeast Asia Other

It same as the operation of Alipay

Instruction of Background Operation



以勒新零售平台

导出数据并保存! (Attention please! All the data before Jan. 1, 2021 on the LE platform will be closed on May 1, 2022 ,please export the data and save

Background page pay settings My Equipment Refresh Operations

Equipment ID: Operator number:

Equipment alias: Device type: Please select a Query Export devices

Num	Equipmen...	Transfer equi...	Configure coll...	automatic ref...	Equipment ID	Equipment alias	Pay unit (Receiving ...	Device type	Model d...
1	To view	Transfer of mac	Set up	ON	0000004068	以勒2楼	上海鱼和水(1584429...	Vending machine	LE225A
2	To view	Transfer of mac	Set up	ON	17010100001	以勒3楼	张是(1550671574332...	Vending machine	LE225

8, Choose the newly pay unit

7, After the pay unit ia added, click "Equipment" and "My Equipment"

Previous 1 Next 共 2 条 15 条/页

Instruction of Background Operation



以勒新零售平台

2021年1月1号之前的数据将在2022年5月1号起才

Background page | Equipment State | My Equipment

Refresh | Operations

Equipment ID: Operator number:

Equipment alias: Device type: Please select a

Num	Equipmen...	Transf
1	<input type="button" value="To view"/>	<input type="button" value="Tra"/>
2	<input type="button" value="To view"/>	<input type="button" value="Tra"/>

Configure collection account

Equipment ID:

Pay unit:

9, Select "configure collection account"

10, Finally click "submit imediately"

(Receiving ...	Device type	Model d...
印水(1584429...	Vending machine	LE225A
50671574332...	Vending machine	LE225

Previous 1 Next 共2条 15条/页

Instruction of Background Operation



4. User Management

以勒新零售平台 2021年1月1号之前的数据将

Background page Operator list Refresh Operations

Operator number: Increase

Operator name: Query

1, Firstly click "User management" then "Operator list"

2, Click "Increase" to build a sub account. (Do not perform this step if you don't need it.)

Num	Operator n...	Delete	Editor	Operator c...	Operator n...	Describe	The contact	Contact nu...	address	Child Use ...	operator.u...	Whether to...
1	▶ 100...	Delete	Editor	Primary op...	客户培训...	客户培训	钟建	13675885...	余杭			

Instruction of Background Operation



以勒新零售平台



Jan. 1, 2021 on the LE platform will be closed on May 1, 2022 ,please export the data and save in time!

Background page Operator list User List Refresh Operations



客户培训 Hello!

- Personal center
- Pay unit
- User management
- Operator list
- User List**
- Equipment
- 设备电子锁管理
- Sales record
- Sales statistics
- Goods
- PUSH
- Coffee recipe
- BUG and suggestion
- Renew manage
- System manage...

User name: Email: Increase

Mobile phone: Operator number: Query

Add User

User name:

Email:

Mobile phone:

Gender: Man Woman

Permissions to choose:

Operator:

Describe:

Login immediately Reset

G...	Operator nu...	Operator name
W...	11576	LE-VENDING
W...	10013	客户培训账号
Man	10732	上海鱼和水
Man	10643	JaneChen
Man	10013	客户培训账号
Man	10013	客户培训账号
Man	10013	客户培训账号
Man	10013	客户培训账号
Man	10013	客户培训账号
Man	10013	客户培训账号
Man	10013	客户培训账号
Man	10013	客户培训账号
W...	10013	客户培训账号
Man	10013	客户培训账号
Man	10014	杭州以勒A

3, Enter information about the user

4, Click "Login immediately"

Instruction of Background Operation



以勒新零售平台



在以勒平台开放查询, 请及时导出数据并保存! (Attention please! All the data before Jan. 1, 2021 on the LE platform will be closed on May 1, 2022 ,plea



客户培训 Hello!

Personal center

Pay unit

User management

Operator list

User List

Equipment

设备电子锁管理

Sales record

Sales statistics

Goods

PUSH

Coffee recipe

BUG and suggestion

Renew manage

System manage...

Background page Operator list Refresh Operations

Operator number: Increase

Operator name: Query

After adding new operator, click to check the sub-account.

Num	Operator n...	Delete	Editor	Operator c...	Operator n...	Describe	The contact	Contact nu...	address	Child Use ...	operator.u...	Whether to...
1	100...	Delete	Editor	Primary op...	客户培训...	客户培训	钟建	13675885...	余杭			
2	100...	Delete	Editor	Secondary...	杭州以勒A		张三	15168405...	福建福州...	USE	home.notAllow ...	accept
3	100...	Delete	Editor	Secondary...	金益彪11		金益彪	15057144...	浙江省杭...	Dont use	home.notAllow ...	accept
4	101...	Delete	Editor	Secondary...	aaaass	uy	lily	18711223...	国外国外7...	Dont use	home.notAllow ...	accept
5	106...	Delete	Editor	Secondary...	JaneChen	JaneChen ...	Mr. Yu	13912345...	上海市上...	Dont use	home.notAllow ...	accept
6	107...	Delete	Editor	Secondary...	上海鱼和水		于海明	18136762...	上海市上...	USE	home.notAllow ...	accept
7	107...	Delete	Editor	Secondary...	崇明岛测试		于海明	18136762...	上海市上...	Dont use	home.notAllow ...	accept
8	11576	Delete	Editor	Secondary...	LE-VENDI...	hangzhou	yolanda	15868108...	国外国外C...	Dont use	home.notAllow ...	accept

Instruction of Background Operation



以勒新零售平台



2021年1月1号之前的数据将在2022年5月1号起不在以勒平台开放查询



客户培训 Hello!

- Personal center
- Pay unit
- User management
- Operator list**
- User List
- Equipment
- 设备电子锁管理
- Sales record
- Sales statistics
- Goods
- PUSH
- Coffee recipe
- BUG and suggestion
- Renew manage
- System manage...

Background page Operator list User List Refresh Operations

User name: Email: Increase
Mobile phone: Operator number: Query

6, Click "Increase"

5, Click "User List"

Num	Delete	Editor	Unbundling ...	Configure per...	User name	Email	Mobile phone	G...	Operator nu...	Operator name
1	Delete	Editor	Unbundling We	Set up/Modify	LE-VENDING	sales@ylvending.com	15868108956	W...	11576	LE-VENDING
2	Delete	Editor	Unbundling We	Set up/Modify	Yolanda	2758130347@qq.com	15868108956	W...	10013	客户培训账号
3	Delete	Editor	Unbundling We	Set up/Modify	于海明	397731369@qq.com	18136762042	Man	10732	上海鱼和水
4	Delete	Editor	Unbundling We	Set up/Modify	Yu	Yu@xxx.com	13912345678	Man	10643	JaneChen
5	Delete	Editor	Unbundling We	Set up/Modify	孙	23884338@qq.com	13336129870	Man	10013	客户培训账号
6	Delete	Editor	Unbundling We	Set up/Modify	卢靖宇	717603730@qq.com	13396539685	Man	10013	客户培训账号
7	Delete	Editor	Unbundling We	Set up/Modify	ceshi	f348672100@qq.com	15565652525	Man	10013	客户培训账号
8	Delete	Editor	Unbundling We	Set up/Modify	cershi	e348672100@qq.com	18865442424	Man	10013	客户培训账号
9	Delete	Editor	Unbundling We	Set up/Modify	cehi	d348672100@qq.com	15685852525	Man	10013	客户培训账号
10	Delete	Editor	Unbundling We	Set up/Modify	zkrxjieru	c348672100@qq.com	18865655252	Man	10013	客户培训账号
11	Delete	Editor	Unbundling We	Set up/Modify	ceshi1	b348672100@qq.com	18865542424	Man	10013	客户培训账号
12	Delete	Editor	Unbundling We	Set up/Modify	利叶青1	511748514@qq.com	13335818506	Man	10013	客户培训账号
13	Delete	Editor	Unbundling We	Set up/Modify	覃茵	3436944071@qq.com	17858626550	W...	10013	客户培训账号
14	Delete	Editor	Unbundling We	Set up/Modify	培训客户	1794900199@qq.com	15168405944	Man	10013	客户培训账号
15	Delete	Editor	Unbundling We	Set up/Modify	张三	zhangsan@qq.com	15168405944	Man	10014	杭州以勒A

Instruction of Background Operation



以勒新零售平台

开放查询, 请及时导出数据并保存! (Attention please! All the data before Jan. 1, 2021 on the LE platform will be closed on May 1, 2022 ,please export t

Background page Operator list User List Refresh Operations

User name: Email: Increase

Mobile phone: Operator number: Query

Add User

User name: Please enter user name

Email: Please enter email

Mobile phone: Please enter mobile phone

Gender: Man Woman

Permissions to choose: Please select a

Operator: Please select a

Describe: Please enter user description

Login immediately Reset

7, choose the new user.(there will give you the choices if you add the user in last step.

Num	Delete	Editor	Operator name
1	Delete	Editor	LE-VENDING
2	Delete	Editor	客户培训账号
3	Delete	Editor	上海鱼和水
4	Delete	Editor	JaneChen
5	Delete	Editor	客户培训账号
6	Delete	Editor	客户培训账号
7	Delete	Editor	客户培训账号
8	Delete	Editor	客户培训账号
9	Delete	Editor	客户培训账号
10	Delete	Editor	客户培训账号
11	Delete	Editor	客户培训账号
12	Delete	Editor	客户培训账号
13	Delete	Editor	客户培训账号
14	Delete	Editor	客户培训账号
15	Delete	Editor	杭州以勒A

Previous 1 2 Next 共 16 条 15 条/页

Instruction of Background Operation

以勒新零售平台

2021年1月1号之前的数据将在2022年5月1号起不在以勒

Background page Operator list User List Refresh Operations

User name: [] Email: [] Increase

Mobile phone: [] Operator number: [] Query

Add User

User name: [Please enter user name]

Email: [Please enter email]

Mobile phone: [Please enter mobile phone]

Gender: Man Woman

Permissions to choose: [Please select a]

Operator: [Please select a]

Describe: [Please enter user description]

Login immediately Reset

8, Click "Login immediately" after entering all information.

Num	Delete	Editor
1	Delete	Editor
2	Delete	Editor
3	Delete	Editor
4	Delete	Editor
5	Delete	Editor
6	Delete	Editor
7	Delete	Editor
8	Delete	Editor
9	Delete	Editor
10	Delete	Editor
11	Delete	Editor
12	Delete	Editor
13	Delete	Editor
14	Delete	Editor
15	Delete	Editor

Operator name
LE-VENDING
客户培训账号
上海鱼和水
JaneChen
客户培训账号
客户培训账号
客户培训账号
客户培训账号
客户培训账号
客户培训账号
客户培训账号
客户培训账号
客户培训账号
客户培训账号
客户培训账号
客户培训账号
客户培训账号
杭州以勒A

Previous 1 2 Next 共 16 条 15 条/页

Instruction of Background Operation



以勒新零售平台 2021年1月1号之前

Background page User List Refresh Operations

User name: Email: Increase

Mobile phone: Operator number: Query

客户培训 Hello!

- Personal center
- Pay unit
- User management
- Operator list
- User List**
- Equipment
- 设备电子锁管理
- Sales record
- Sales statistics
- Goods
- PUSH
- Coffee recipe
- BUG and suggestion
- Renew manage
- System manage...

Num	Delete	Editor	Unbundling We...	Configure per...	User name	Email	Mobile phone	G...	Operator nu...	Operator name
1	Delete	Editor	Unbundling We...	Set up/Modify	LE-VENDING	sales@ylvending.com	15868108956	W...	11576	LE-VENDING
2	Delete	Editor	Unbundling We...	Set up/Modify	Yolanda	2758130347@qq.com	15868108956	W...	10013	客户培训账号
3	Delete	Editor	Unbundling We...	Set up/Modify	于海明	397731369@qq.com	18136762042	Man	10732	上海鱼和水
4	Delete	Editor	Unbundling We...	Set up/Modify	Yu	Yu@xxx.com	13912345678	Man	10643	JaneChen
5	Delete	Editor	Unbundling We...	Set up/Modify	孙	23884338@qq.com	13336129870	Man	10013	客户培训账号
6	Delete	Editor	Unbundling We...	Set up/Modify	卢靖宇	717603730@qq.com	13396539685	Man	10013	客户培训账号
7	Delete	Editor	Unbundling We...	Set up/Modify	ceshi	f348672100@qq.com	15665652525	Man	10013	客户培训账号
8	Delete	Editor	Unbundling We...	Set up/Modify	cershi	e348672100@qq.com	18865442424	Man	10013	客户培训账号
9	Delete	Editor	Unbundling We...	Set up/Modify	cehi	d348672100@qq.com	15685852525	Man	10013	客户培训账号
10	Delete	Editor	Unbundling We...	Set up/Modify	zkrxjieru	c348672100@qq.com	18865655252	Man	10013	客户培训账号
11	Delete	Editor	Unbundling We...	Set up/Modify	ceshi1	b348672100@qq.com	18865542424	Man	10013	客户培训账号
12	Delete	Editor	Unbundling We...	Set up/Modify	利叶青1	511748514@qq.com	13335818506	Man	10013	客户培训账号
13	Delete	Editor	Unbundling We...	Set up/Modify	覃苗	3436944071@qq.com	17858626550	W...	10013	客户培训账号
14	Delete	Editor	Unbundling We...	Set up/Modify	培训客户	1794900199@qq.com	15168405944	Man	10013	客户培训账号
15	Delete	Editor	Unbundling We...	Set up/Modify	张三	zhangsan@qq.com	15168405944	Man	10014	杭州以勒A

9, Choose the new user you add in last step to modify

Previous 1 2 Next 共 16 条 15 条/页

Instruction of Background Operation



以勒新零售平台 2021年1月1号之前的表

Background page User List Refresh Operations

User name: Email: Increase

Mobile phone: Operator number: Query

Num	Delete	Editor	Unbundling ...	Configure per...	User name	Email	Mobile phone	G...	Operator nu...	Operator name
1	Delete	Editor						W...	11576	LE-VENDING
2	Delete	Editor						W...	10013	客户培训账号
3	Delete	Editor						Man	10732	上海鱼和水
4	Delete	Editor						Man	10643	JaneChen
5	Delete	Editor						Man	10013	客户培训账号
6	Delete	Editor						Man	10013	客户培训账号
7	Delete	Editor						Man	10013	客户培训账号
8	Delete	Editor						Man	10013	客户培训账号
9	Delete	Editor						Man	10013	客户培训账号
10	Delete	Editor						Man	10013	客户培训账号
11	Delete	Editor						Man	10013	客户培训账号
12	Delete	Editor						Man	10013	客户培训账号
13	Delete	Editor	Unbundling We	Set up/Modify	覃茵	3436944071@qq.com	17858626550	W...	10013	客户培训账号
14	Delete	Editor	Unbundling We	Set up/Modify	培训客户	1794900199@qq.com	15168405944	Man	10013	客户培训账号
15	Delete	Editor	Unbundling We	Set up/Modify	张三	zhangsan@qq.com	15168405944	Man	10014	杭州以勒A

Configure permission roles

User name: LE-VENDING

Email: sales@ylvending.com

Permissions to choose: Please select a

Login immediately

10, Click "Login Immediately" to finish modifying (Sub-account has right to check the data of the machine but no modification. Administrator has right to modify the information of goods).

Previous 1 2 Next 共 16 条 15 条/页

Instruction of Background Operation



5. Equipment

以勒新零售平台

前的数据将在2022年5月1号起不在以勒平台开放查询, 请及时导出数据并保存! (Attention please! All the data before Jan. 1, 2021 on the LE platform will b

Background page User List My Equipment Refresh Operations

Equipment ID: Operator number:

Equipment alias: Device type: Please select a Query Export device

The name of machine: You are advised to set it by place name

Transfer the machine to sub-account

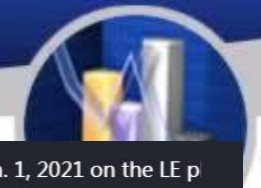
Num	Equipmen...	Transfer equi...	Configure coll...	automatic ref...	Equipment ID	Equipment alias	Pay unit (Receiving ...	Device type	Model d...
1	To view	Transfer of mac	Set up	ON	00000004068	以勒2楼	上海鱼和水(1584429...	Vending machine	LE225A
2	To view	Transfer of mac	Set up	ON	17010100001	以勒3楼	张是(1550671574332...	Vending machine	LE225

1, My Equipment in Equipment shows information of operator

Pay Unit

Previous 1 Next 共 2 条 15 条页

Instruction of Background Operation



以勒新零售平台

21年1月1号之前的数据将在2022年5月1号起不在以勒平台开放查询,请及时导出数据并保存! (Attention please! All the data before Jan. 1, 2021 on the LE p

Background page User List My Equipment Refresh Operations

Equipment ID: Operat

Equipment alias: Devi

Please build a account before transfer the machine.

Num	Equipmen...	Transfer equi...	Cor
1	To view	Transfer of mac	
2	To view	Transfer of mac	

Transfer of machine

Equipment ID: 17010100001

The current device operator: 客户培训账号

Transfer operator: Please select a

Submit immediately Reset

Select the corresponding transfer operator and click "Submit Immediately" to complete transfer.(It's a way of transferring the management rights to sub-account so that the machine can be managed by sub-account, but the main account also has the rights of modifying.

Device type	Model d...
Vending machine	LE225A
Vending machine	LE225

Transfer o... X

Previous 1 Next 共2条 15条/页

Instruction of Background Operation



以勒新零售平台

2021年1月1号之前的数据将在2022年5月1号起不在以勒平台开放查询，请

Background page Equipment State

Refresh Operations

Equipment ID: Operator number: Equipment alias: Device type: Please select a Query

Num	Equipment ID	Equipment alias	Device t...	Last connection t...	Cont...	当前库存/最大库存	Network type4G/...	Signal stren...	Equipmen...	Error me
1	00000004068	以勒2楼	Vending ...	2020-04-07 15:3...	A	A柜: 45/54	4G	Not connect...	Normal	OK
2	17010100001	以勒3楼	Vending ...	2019-03-11 10:4...	A	A柜: -1/-1	Unknown	Not connect...	Normal	OK

machine's type

ID number

The time connecting Internet

signal strenth

The machine's state can be checked in equipment state

type of Internet

The other information about the machine

Previous 1 Next 共 2 条 15 条/页

Instruction of Background Operation



6.Sales Record

以勒新零售平台

1号之前的数据将在2022年5月1号起不在以勒平台开放查询，请及时导出数据并保存！ (Attention please! All the data before Jan. 1, 2021 on the LE platform)

Background page | User List | My Equipment | Equipment State | Replenishment order | Sales success record | Refresh | Operations

The start of time: 2022-04-13 00:00:00 The end of time: 2022-04-13 23:59:59 Operator number: Method of payment: Please select a Device type: Please select a

Goods name: Equipment alias: Equipment ID: Order ID: Query Export data

Num	Equipment ID	Equipment alias	Device t...	Order ID	Currenc...	Method ...	Payee merchant num...	Track...	Cont...	Good...
无数据										

1, Click "Sales success record" in Sales record. It's the real stastic that cancle the deal sales failure

- Personal center
- Pay unit
- User management
- Equipment
 - 设备电子锁管理
- Sales record
 - Sales success record**
 - 销售成功记录 [新]
 - Sales failure record
 - 销售失败记录 [新]
 - Allipay trading order
 - WeChat trading orde
 - 收钱吧流水记录
- Sales statistics
- Goods
- PUSH
- Coffee recipe
- BUG and suggestion
- Renew manage
- System manageme...

Instruction of Background Operation



以勒新零售平台 2021年1月1号之前的数据将在2022年5月1号起不在以勒平台开放

Background page | User List | My Equipment | Equipment State | Replenishment order | Sales success record | Refresh | Operations

The start of time: 2022-04-13 00:00:00 | The end of time: 2022-04-13 23:59:59 | Operator number: | Method of payment: Please select a | Device type: Please select a

Goods name: | Equipment alias: | Equipment ID: | Order ID: | [Query](#) | [Export data](#)

Select the time period you want to search and filter to get sales records.

Num	Equipment ID	Equipment alias	Device t...	Order ID	Currenc...	Method ...	Payee merchant num...	Track...	Cont...	Good:
无数据										

And then Click query and export data

- Personal center
- Pay unit
- User management
- Equipment
 - 设备电子锁管理
- Sales record
 - Sales success record**
 - 销售成功记录 [新]
 - Sales failure record
 - 销售失败记录 [新]
 - Allpay trading order
 - WeChat trading orde
 - 收钱吧流水记录
- Sales statistics
- Goods
- PUSH
- Coffee recipe
- BUG and suggestion
- Renew manage
- System manageme...

Instruction of Background Operation



以勒新零售平台

2021年1月1号之前的数据将在2022年5月1号起不在以勒平台开放查询, 请及时导出数据并保存! (Attention please! All the data before Jan. 1, 2021 on

User List x My Equipment x Equipment State x Replenishment order x Sales success record x Sales failure record x Refresh Operations

Equipment ID: The start of time: The end of time: Goods name:

Order ID: Operator number: Equipment alias: Device type:

Num	Equipment ID	Equipment alias	Device type	Storage time(China)	Time of shipment	Order ID	data.falidR
1	0000000009	孙晴晴测试机9	Coffee machine	2019-03-20 14:07:48	2019-03-20 14:07:47	000000000919032014072101219637	
2	0000000009	孙晴晴测试机9	Vending machine	2019-03-18 10:25:30	2019-03-18 10:25:04	000000000919031810250492613196	
3	0000000009	孙晴晴测试机9	Vending machine	2019-03-18 09:26:24	2019-03-18 09:20:12	000000000919031809201296011016	
4	0000000009	孙晴晴测试机9	Vending machine	2019-03-16 12:58:15	2019-03-16 12:58:09	000000000919031612580965615385	
5	0000000009	孙晴晴测试机9	Vending machine	2019-03-16 10:47:42	2019-03-16 10:47:13	000000000919031610471351217291	
6	0000000009	孙晴晴测试机9	Vending machine	2019-03-16 10:36:11	2019-03-16 10:35:45	000000000919031610354582616573	
7	0000000009	孙晴晴测试机9	Vending machine	2019-03-16 10:35:37	2019-03-16 10:35:24	000000000919031610352485615585	
8	0000000009	孙晴晴测试机9	Vending machine	2019-03-16 10:32:13	2019-03-16 10:32:00	000000000919031610320085119119	
9	0000000009	孙晴晴测试机9	Coffee machine	2019-03-02 16:21:45	2019-03-02 16:21:44	000000000919030216213645416645	
10	0000000009	孙晴晴测试机9	Vending machine	2019-02-15 15:36:47	2019-02-15 15:36:28	000000000919021515362835818964	
11	0000000009	孙晴晴测试机9	Vending machine	2019-02-15 15:10:07	2019-02-15 15:09:39	000000000919021515093976016172	
12	0000000009	孙晴晴测试机9	Coffee machine	2019-01-28 13:11:09	2019-01-28 13:08:45	000000000919012813084056914522	
13	0000000009	孙晴晴测试机9	Coffee machine	2019-01-28 12:55:55	2019-01-28 12:51:37	000000000919012812513239917501	
14	0000000009	孙晴晴测试机9	Coffee machine	2019-01-28 12:55:54	2019-01-28 12:51:55	000000000919012812515006019137	
15	0000000009	孙晴晴测试机9	Coffee machine	2019-01-27 15:29:16	2019-01-27 15:27:09	000000000919012715265872218193	

This is the record of backing the money to customer when machine detected that unshipped goods

Previous 1 2 3 Next 共42条 15条/页

Instruction of Background Operation



以勒新零售平台

2021年1月1号之前的数据将在2022年5月1号起不在以勒平台开放查询

User List My Equipment Equipment State Replenishment order Sales success record Sales failure record Refresh Operations

Equipment ID: The start of time: The end of time: Goods name:

Order ID: Operator number: Equipment alias: Device type: Please select a Query

Export data

Num	Equipment ID	Equipment alias	Device type	Storage time(China)	Time of shipment	Order ID	data.faildR
1	0000000009	孙晴晴测试机9	Coffee machine	2019-03-20 14:07:48	2019-03-20 14:07:47	000000000919032014072101219637	
2	0000000009	孙晴晴测试机9	Vending machine	2019-03-18 10:25:30	2019-03-18 10:25:04	000000000919031810250492613196	
3	0000000009	孙晴晴测试机9	Vending machine	2019-03-18 09:26:24	2019-03-18 09:20:12	000000000919031809201296011016	
4	0000000009	孙晴晴测试机9	Vending machine	2019-03-16 12:58:15	2019-03-16 12:58:09	000000000919031612580965615385	
5	0000000009	孙晴晴测试机9	Vending machine	2019-03-16 10:47:42	2019-03-16 10:47:13	000000000919031610471351217291	
6	0000000009	孙晴晴测试机9	Vending machine	2019-03-16 10:36:11	2019-03-16 10:35:45	000000000919031610354582616573	
7	0000000009	孙晴晴测试机9	Vending machine	2019-03-16 10:35:37	2019-03-16 10:35:24	000000000919031610352485615585	
8	0000000009	孙晴晴测试机9	Vending machine	2019-03-16 10:32:13	2019-03-16 10:32:00	000000000919031610320085119119	
9	0000000009	孙晴晴测试机9	Coffee machine	2019-03-02 16:21:45	2019-03-02 16:21:44	000000000919030216213645416645	
10	0000000009	孙晴晴测试机9	Vending machine	2019-02-15 15:36:47	2019-02-15 15:36:28	000000000919021515362835818964	
11	0000000009	孙晴晴测试机9	Vending machine	2019-02-15 15:10:07	2019-02-15 15:09:39	000000000919021515093976016172	
12	0000000009	孙晴晴测试机9	Coffee machine	2019-01-28 13:11:09	2019-01-28 13:08:45	000000000919012813084056914522	
13	0000000009	孙晴晴测试机9	Coffee machine	2019-01-28 12:55:55	2019-01-28 12:51:37	000000000919012812513239917501	
14	0000000009	孙晴晴测试机9	Coffee machine	2019-01-28 12:55:54	2019-01-28 12:51:55	000000000919012812515006019137	
15	0000000009	孙晴晴测试机9	Coffee machine	2019-01-27 15:29:16	2019-01-27 15:27:09	000000000919012715265872218193	

Previous 1 2 3 Next 共 42 条 15 条/页

If the customer in Alipay or Wechat, the deal can be checked in the Alipay/Wechat trading order

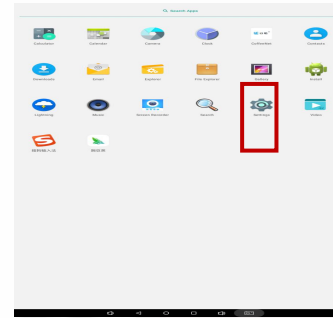
Installation of Operating System



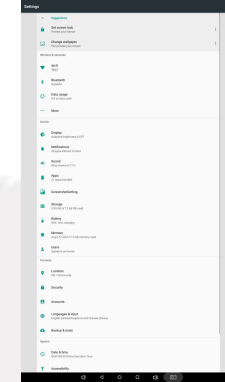
Power up the device first



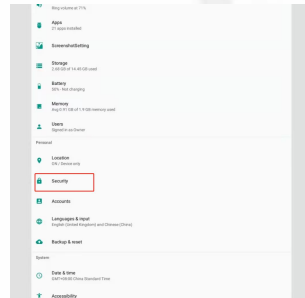
Click the 6 circles at the bottom of the interface after factory reset, enter the picture above and click OK



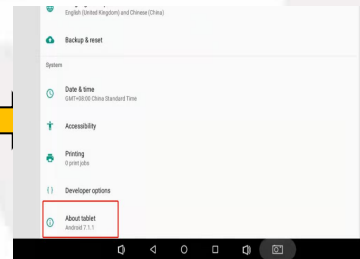
Click on settings



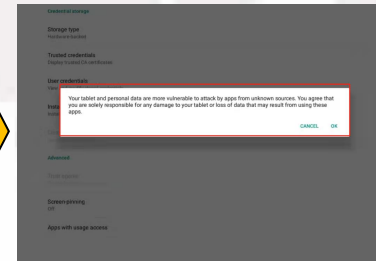
Click on the date and time settings, and tick the Use 24-hour mode



Click Security Settings, tick Unknown Sources and confirm to complete as shown above:



Click the version number five to six times in a row and the developer options will appear as shown above



Click on the USB debugging check box to confirm the completion as shown above

Installation of Operating System



Second Step: (Installat Software)

Copy the installtion package to the U disk and then insert the U disk into the USB port of the industrial computer.

Insert the U disk with the program into the USB port and open the file management

Click the [File Management] application in the application, click the selection column "/mnt/sdcard" in the second row of the "File Management", and after the columns are expanded, select "mnt"; or directly click the selection column "/mnt/sdcard" "Up" arrow to return to "mnt".

Then click "udisk" or "usbdisk_1.1.1" to install the software in turn.

1.Install the "push software" vmpush_Vxxx.apk, click Finish when the installation is complete, please click this button] button to exit the program.

3.Install the "main program" vmself_V xxx.apk, [Open] the program.

Third step: hide bottom navigation bar

hide bottom navigation bar: In the [Settings] function, [Display] [Full Screen Display] √, the screen will restart after the prompt "The device needs to be restarted for the setting to take effect" after selecting "OK".

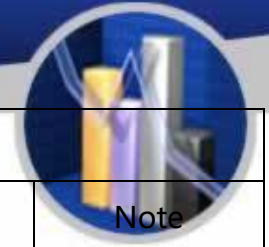
Fourth step: Other

1.Show or hide the function bar

Display function bar: In the [Settings] function, [Display][Full screen display] √Remove it, and the screen will restart after the prompt "Restart the device for the setting to take effect" and select "OK".

Hide the function bar: [Display][Full screen display] √ in the [Settings] function, it prompts "The device needs to be restarted for the settings to take effect", and the screen restarts after selecting "OK".

Common Issues and Solutions



Common Issues and Solutions

Number	Issues	Reasons	Solutions	Note
1	Beverages cannot run.	1. The recipe may not be set properly.	1、 Adjust the recipe of beverage.	
		2. Water pipe or powder pipe may be choked.	1、 Clear water pipe and powder pipe regularly to ensure smooth flow of beverage. 2、 If the grinding components are choked, please change the decompression valve.	
2	Grinding components work improperly.	1. The grinding engine may be choked by things like coffee beans. 1. Check whether there is any foreign body stuck. If so, dispose of them timely	1. Check whether there is any foreign body stuck. If so, dispose of them timely.	
		3. The power cord of the grinding engine may not be connected properly.	1. Check whether all the wires are connected to the grinding engine and see if there is any broken part	
		4. The grinding drive board may not be functioning.	1. Check whether the voltage of the grinding engine is normal. If it is normal, then there is no need of replacement.	
		1. The electromagnet may not be working normally.	1. Check whether the voltage of the grinding engine is normal. If it is normal, then there is no need of replacement. 2. Change the grinding engine.	
3	Powders cannot run.	1. The electromagnet may not be working normally.	1. Check whether the wire is connected properly. 2. Change the electromagnet of the electromagnet of powder.	
		2. The canister may be choked by powder.	1、 清理落粉组件内部咖啡粉	
		3. The micro switch of the powder components may be broken.	1、 更换微动开关	

Common Issues and Solutions



4	Brew timed out	1. The brewer may be stuck with powder and the parts may be dislocated	1. Check whether the brewer is stuck with powder. If the powder is stuck, clean it up directly. If it is misplaced, you need to disassemble the brewer and reassemble it.	
		2.Maybe there is something wrong on brewing motor.	1. Check whether the wire ends are falling off or loose. 2. Check the brewing motor. There are two micro switches on the brewing motor. Some microswitches may move up, and you need to use a tool to fold them down a little.	
		3.Maybe there are something wrong on brewing motor	1.Replace brewer motor.	
		4. The grinding bean driver board is not powered	1.Detect whether there is 220V voltage output when grinding the beans, no need to replace the grinding driver board	
		5. Too much powder gets stuck	1. Adjust the storage capacity of the falling powder electromagnet	
		6. Grinding beans too finely, the coffee grounds cannot be discharged	1. Adjust the fineness of the grinding beans	
5	The moving nozzle work improperly.	1. Test the moving nozzle to see whther it can move.	1. If the nozzle does not move, replace the nozzle moving motor	Test whether it has 12V DC
		2.To test the moving nozzle move to it right place.	2.Clean the moving nozzle	Check for loose wires
		3.To test if the moving nozzle has action.	3,Replace moving nozzle micro switch	
6	Temperature sensor is broken	1. Check whether the sensor wire is loose	1. Re-plug the temperature sensor cable	
		2.Checking the temperature of boiler	1. When the boiler temperature is too high, turn off the machine, unplug one of the boiler heating wires, turn on the exhaust gas until the boiler temperature reaches normal temperature, turn off the machine, plug in the heating wire, and turn it on. 2.Checking if the wire on driver board is loose.	
			3. Replace the temperature sensor	

Common Issues and Solutions



7	Machine has no Internet	1. The SIM card may be in arrears	1. Recharge the SIM card.	
		2. Is the SIM card broken	1. Replace the SIM card.	
		3. The PC may not be able to read the network	1. The signal is too weak	
		4. The antenna may not be plugged in properly	1. Check whether the network cable and antenna are loose.	
		5. There may be a problem with the card slot of the PC	1. Replace the PC	
8	Cannot pay by Alipay or Wechat Pay	1. Network and signal problems	1. Check whether the network is normal and the signal is fluently.	
		2. There may be no background binding	1. Perform background binding and bind the machine ID to the background management.	
		3. The payee and public account information may not be bound	1. To bind the information of the payee, you need to provide various information of the payee according to the sales process.	
9	Machine has no power	1. The machine may be out of power at the power supply.	1. Check whether there is electricity at the power connection of the machine.	
		2. The connectors at both ends of the power cord may be loose	1. Check whether the wire ends in the power box of the machine are loose. 2. Check if the filter wire is loose	
		3. The switching power supply box may be damaged	1. Measure whether the power supply box has voltage output, and replace the corresponding power supply box	
10	There is static electricity at the sheet metal of the machine	1. Whether the machine is grounded	1. Check whether the machine socket has three-phase power, if not, connect the ground wire behind the machine.	
		2. The machine may leak electricity	1. Check whether there is a loose wire inside the machine that causes the machine to leak.	

Common Issues and Solutions



11	Flowmeter has something wrong	1. Check whether the water inlet of the flowmeter is blocked by stains	1. Unblock the flowmeter. Or replace	检查流量计线头有没有松动
			2. Check whether the solenoid valve is normal.	
			3. Check whether the extraction pump is normal	
			4. Replace the driver board.	
12	Boiler not work	1. The temperature switch may trip.	1. Check whether the temperature switch has tripped. If it trips, press the button on the temperature switch directly.	First check whether the heating wire is inserted in place
		2. The temperature may be broken.	1. Replace the boiler.	
		3. The grinder driver board is not powered	1. Detect whether there is 220V voltage output when grinding the beans, no need to replace the grinding driver board	
13	The powder and sugar can't fall.	1. Check the sugar or powder for agglomerate	1. Clean the canister and replace the powder.	When testing, pay attention to whether the motor of the material box is reversed
		2. Check whether the sugar canister is installed	2. Reinstall the sugar canister.	
		3. Check whether there is 24V power supply at the motor power supply	3. First check whether there is output 24V voltage at the 24V low-voltage driver board of the switching power supply box, if not, it needs to be replaced	
14	The tank cannot limit the water level	1. Whether the micro switch has no response.	1. Check whether the micro switch is broken, if it is broken, it needs to be replaced	
		2. There may be a problem with the floating ball of the water level.	1. To clean floating ball or replace.	

Common Issues and Solutions



15	Screen flicker	1.The machine may not be connected to the ground wire	1.Connect the machine to ground wire	
		2. The screen may not be connected to the ground wire	1.Connect the PC to ground wire	
16	Water tank pumping timed out	1. Check whether the water bucket is short of water	1.Replace bucket water	First check whether the pump is powered on (24V)
		2. Check whether the pump is pumping water	2.Replace water pump	
17	Waste box is full.	一、 Check water in waste box	1.Clean waste water box	
		2. Check whether the waste water floats down	2.Clean floating ball.	
		3.Check floating ball macro switch.	3.Replace the ma	
18	Make drinks without water	1. Whether the extraction pump is working	1.Check whether the booster pump is faulty, if there is, it needs to be replaced	
		2.Check whether the instant stirring system is blocked.	1.The mixing system need to be cleaned on time.	
		3. Check whether the electromagnetic valve valve has no signs of working	Replace electromagnetic valve	
		4. Check that the flowmeter is damaged or blocked	1.Clean or replace the folowmeter.	

1. This table is the process method of overhauling the equipment.
2. The content of this table will be continuously updated.

The Instruction of the Multimeter



High-precision digital multimeter vc890d, the commonly used function buttons are as follows.



To measure the DC voltage, first set the gear to DC 200v, insert the red test lead into the vΩ and temp jacks, and the black test lead into the com jack, and start measuring the 9v battery voltage. The red test lead is connected to the positive electrode, and the black test lead is connected to the negative electrode. The measurement result is about 10v, indicating that the battery is good.

The Instruction of the Multimeter



To measure the AC voltage, first set the gear to AC 750v, insert the red test lead into the $v\Omega$ and temp jacks, and the black test lead into the com jack, and start measuring the AC voltage, which is normally around 220v.



For diode measurement, first set the gear to the diode and on-off gears, insert the red test lead into the $v\Omega$ and temp jacks, and the black test lead into the com jack. If the screen shows that the buzzer matches, press select to switch. key, the diode symbol is displayed on the screen, and the diode can be measured



For on-off measurement, first switch the gear to the diode and on-off gears, insert the red test lead into the $v\Omega$ and temp jacks, and the black test lead into the com jack. If the diode symbol is displayed on the screen, press the select switch button, Switch to the buzzer to measure continuity.

The Instruction of the Multimeter



To measure the DC current, first set the gear to 20a, insert the red test lead into the 2ma jack, the black plug into the com jack, connect the multimeter in series with the circuit under test, and measure the current.

A central graphic featuring a handshake in shades of orange and brown, set against a light gray world map background. The hands are wearing blue suit sleeves.

THANKS!